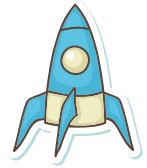
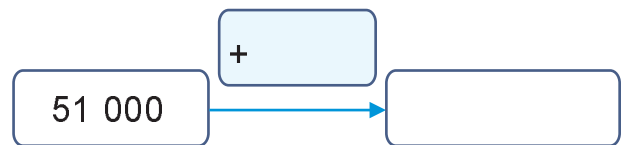
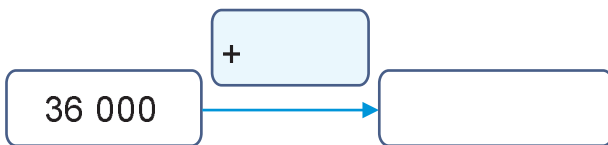
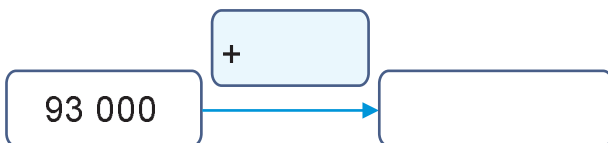
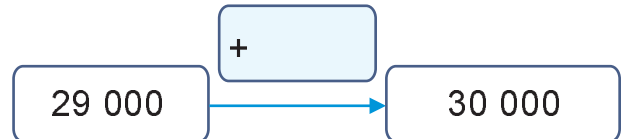




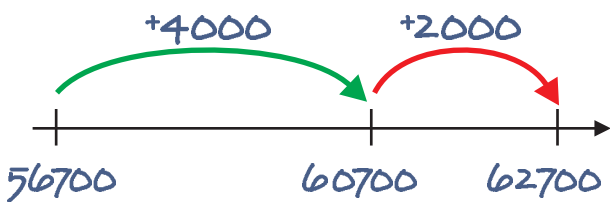
## Kopfrechnen - Addition mit Tausenderzahlen



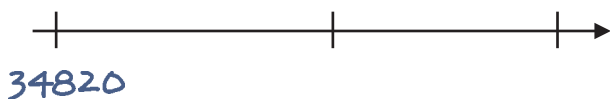
Ergänze zum folgenden vollen Zehntausender!



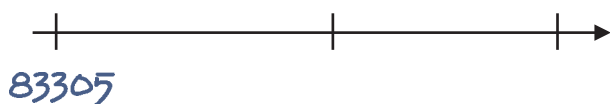
Rechne und zeige deine Berechnung auf dem Rechenstrich.



$56\ 700 + 6\ 000 = \square$



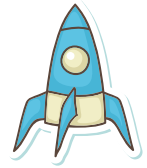
$34\ 820 + 7\ 000 = \square$



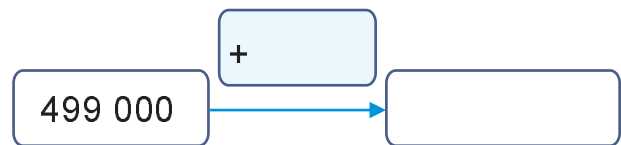
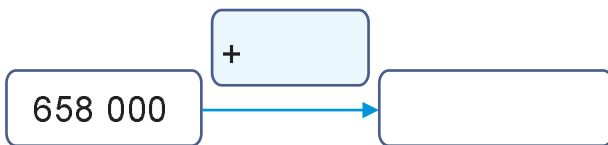
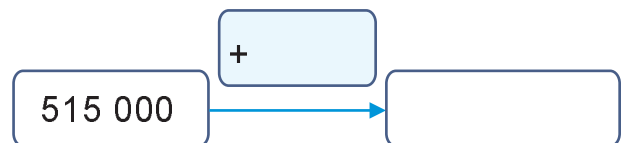
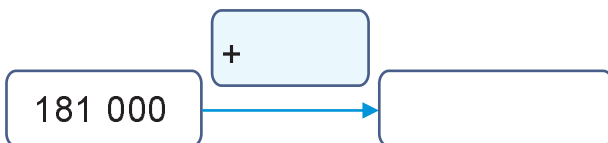
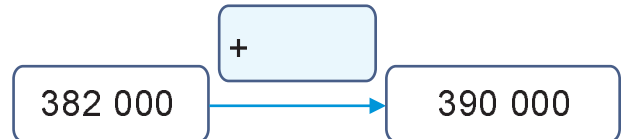
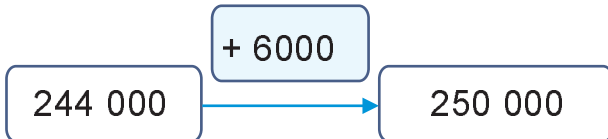
$83\ 305 + 9\ 000 = \square$



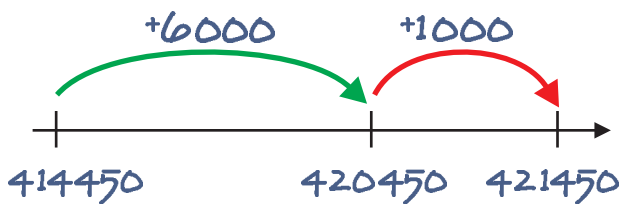
## Kopfrechnen - Addition mit Tausenderzahlen



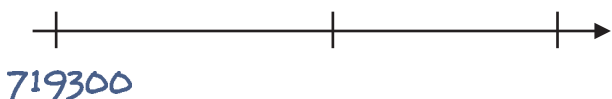
Ergänze zum folgenden vollen Zehntausender!



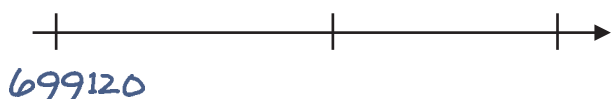
Rechne und zeige deine Berechnung auf dem Rechenstrich.



$414\ 540 + 7\ 000 = \square$



$719\ 300 + 3\ 000 = \square$

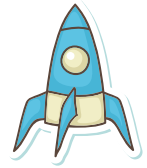


$699\ 120 + 5\ 000 = \square$



## Lösungen

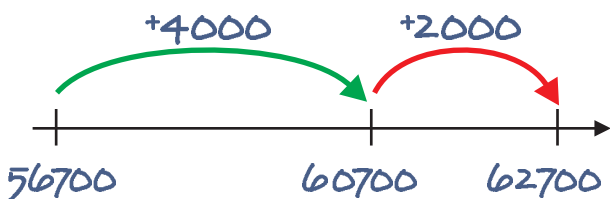
### Kopfrechnen - Addition mit Tausenderzahlen



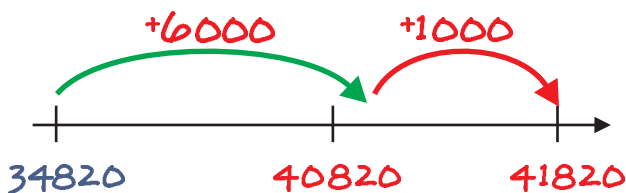
Ergänze zum folgenden vollen Zehntausender!



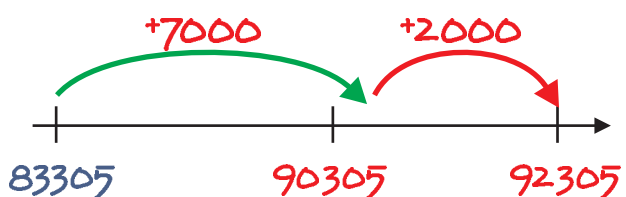
Rechne und zeige deine Berechnung auf dem Rechenstrich.



$$56\,700 + 6000 = 62\,700$$



$$34\,820 + 7000 = 41\,820$$

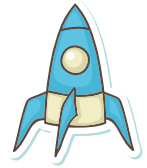


$$83\,305 + 9000 = 92\,305$$



## Lösungen

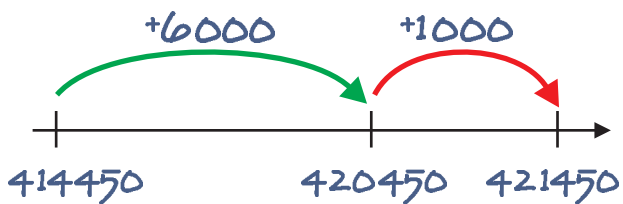
### Kopfrechnen - Addition mit Tausenderzahlen



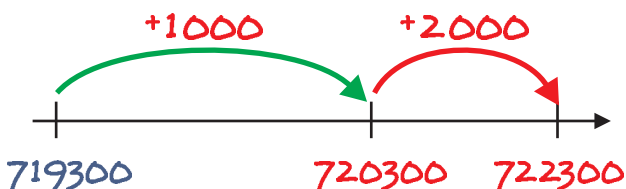
Ergänze zum folgenden vollen Zehntausender!



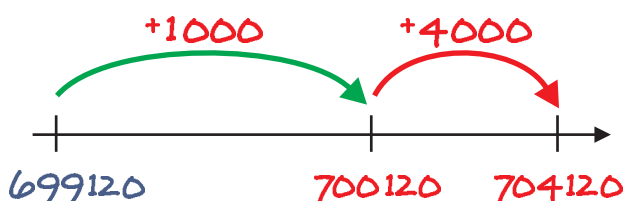
Rechne und zeige deine Berechnung auf dem Rechenstrich.



$$414\,540 + 7\,000 = 421\,540$$



$$719\,300 + 3\,000 = 722\,300$$



$$699\,120 + 5\,000 = 704\,120$$